



**JAVELIN**



Solutions Made Simple  
for the Mobile Workforce

JAVELIN is a software development package that can quickly and easily create applications for portable data terminals. Specifically designed for non-programmers, JAVELIN has the complete functionality required to collect, validate, report and export information into batch and real-time applications.

## Features

JAVELIN offers features that provide a powerful, versatile and extremely reliable data gathering solution.

All programs and collected data from JAVELIN are stored in a fully accessible ODBC database maintained by the JAVELIN application. Microsoft Access, SQL, and all other open databases are supported.

When real-time or remote applications are required, JAVELIN can easily handle the task with both WLAN and WWAN connectivity for data communications. Please refer to JAVELIN CM (Communication Manager) for additional information.

## JAVELIN PC Client

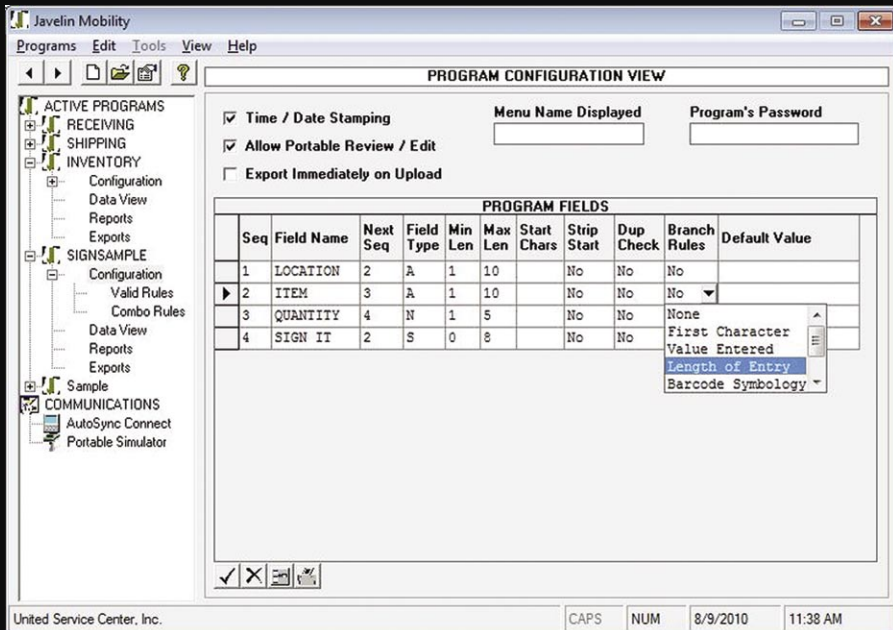
Using the JAVELIN PC Client, an operator can create an unlimited number of data collection applications for use with a mobile terminal.

Each application contains a configuration view where the program flow and data fields are set. In this configuration view:

- Screen sequence and branch rules are defined.
- Validation rules can be created with corresponding import data.
- Special input methods can be enabled to allow for signature capture, image capture, and bar-code scanning.

Once the application design has been completed, the Mobile Client simulator can be used for easy testing and demonstration of the applications before sending them to the mobile terminal!

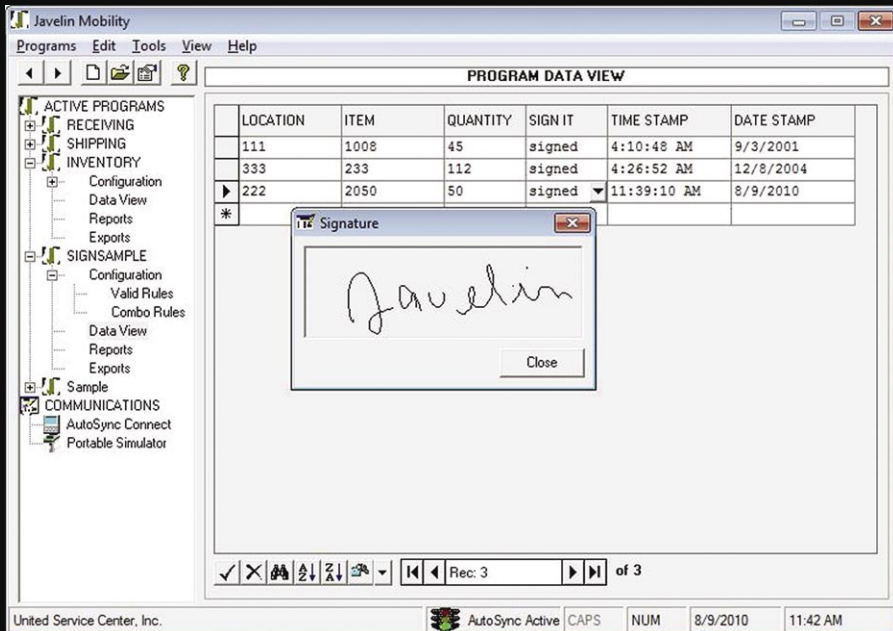
Any data captured by the mobile application is stored in the database and is viewed using the JAVELIN PC Client. Data can be exported to user-formatted text files or printed with user-defined reports.



Each application contains a configuration view where the program flow and data fields are set.

**JAVELIN is a software development package that can quickly and easily create applications for portable data terminals.**

**Specifically designed for non-programmers, JAVELIN has the complete functionality required to collect, validate, report and export information into batch and real-time applications.**



Any data captured by the mobile application is stored in the database and is viewed using the JAVELIN PC Client.

## JAVELIN Mobile Client

Using the JAVELIN Mobile Client, an operator can load any active program from the Javelin PC Client to a mobile terminal.

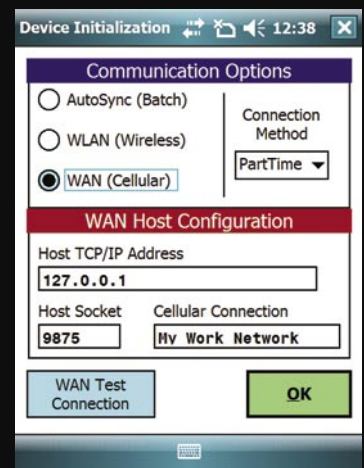
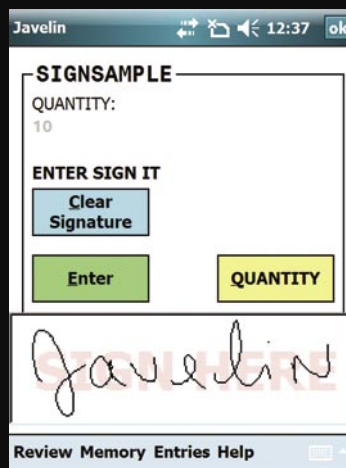
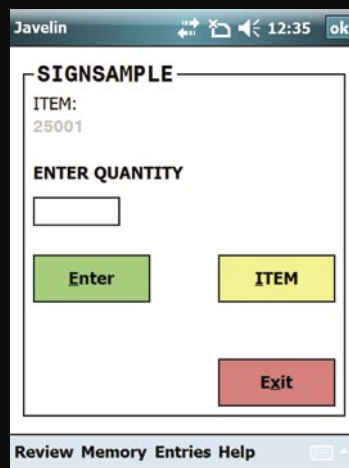
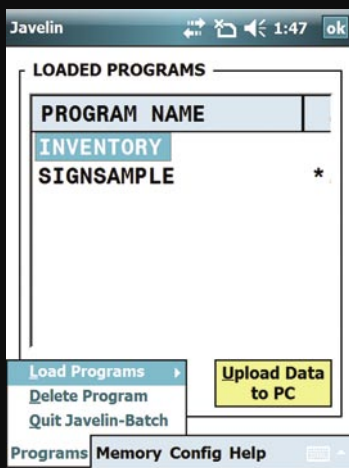
When multiple applications are loaded onto the mobile terminal, the applications are displayed in a list, thus allowing the operator to choose.

The Mobile Client features large control buttons allow operators to use their finger as well as the stylus to navigate.

Multiple methods for entering data include bar-code scanning, signature capture and image capture.

Mobile terminals can be connected to the PC using Windows Mobile Device Center (formerly Microsoft Activesync), WLAN, or WWAN.

*(Please note: Mobile terminals and wireless infrastructure capable of WLAN or WWAN communications are required for JAVELIN real-time mode.)*



When multiple applications are loaded onto the mobile terminal, the applications are displayed in a list.

Large control buttons allow operators to use their finger as well as the stylus to navigate.

Multiple methods for entering data include bar-code scanning, signature capture and image capture.

Mobile terminals can be connected to the PC using Windows Mobile Device Center, WLAN, or WWAN.

## JAVELIN CM Solution for multiple wireless terminals

JAVELIN CM (Communication Manager) is an optional module that can be used with JAVELIN to allow real-time or remote communications with simultaneously-connected wireless terminals (WLAN and WWAN).

With JAVELIN CM, multiple wireless terminals will now access and update the PC database in real-time.

- Downloading large, time-consuming, individual validation files into the mobile terminal is no longer required.
- Validation tables are always up to date since they reside on the PC database.
- Validation data is no longer limited by the memory of the mobile terminal.



***JAVELIN offers features that provide a powerful, versatile and extremely reliable data gathering solution.***

- Explorer styled GUI, which allows ease of use when designing and maintaining data capture applications.
  - Background communications for unattended uploads/downloads to connected portable terminals.
- There is no limit to the number of programs that may be created by the JAVELIN application and stored on the PC.
- Supports mapping of collected data to other software applications through export files and custom validation lookup rules.
  - Supports Microsoft Windows operating systems, including 2003, XP, Vista and Windows 7.



**Solutions Made Simple for the Mobile Workforce**

[www.javelinmobility.com](http://www.javelinmobility.com)